

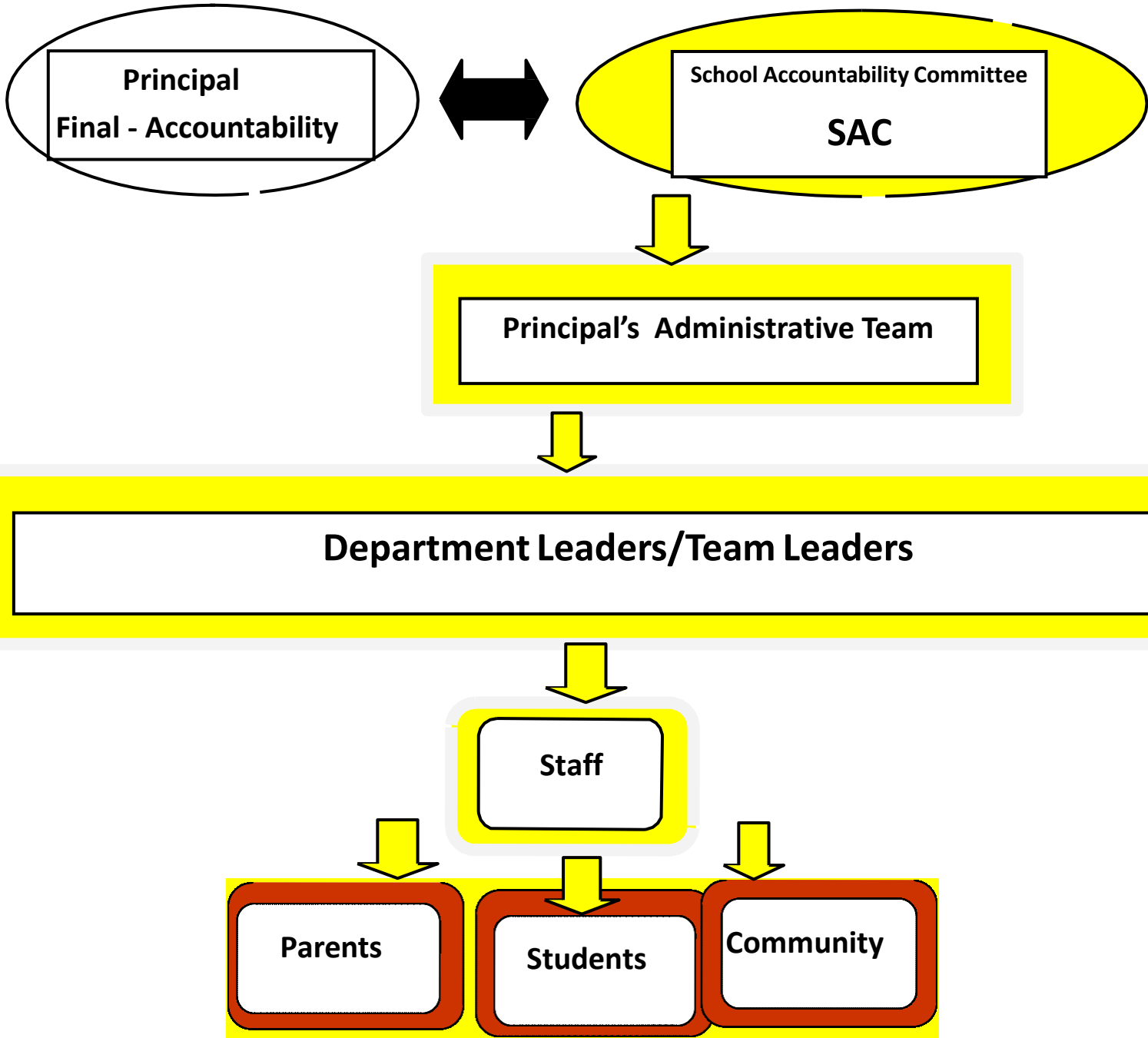


LINCOLN MIDDLE SCHOOL

2018-2019

DECISION MAKING
MATRIX

Lincoln Decision Making Flow Chart



Lincoln Middle School Decision Making Flow Chart

The purpose of this document is to provide guidance, communication, and clarity about how decisions flow centrally and systemically. BOE delegates responsibilities to the Superintendent restricted by and defined by executive limitations and ends policies. Ultimately, the Superintendent is responsible for the leadership and prudent management of the district’s operational and instructional functions of the district. Major building decisions will be made using 2/3 majority vote.

Topic	District Administrators <small>(Assistant Superintendents, Executive Directors, Directors)</small>	Principal’s Administrative Team	SAC PTO	Leadership Team	Staff	Student
Systemic Decisions						
Marketing and Promotion of Schools	©	d _i	©	•	•	
Vision and Mission	©	d _i	©	•	•	
Attendance	d _i	•		•		
District Assessments	d _i	•		•	•	
Student Conduct And Safety	d _i	•		•	•	
Volunteers	d _i	d _i			•	
Professional Development	d _i	d _i	©-SAC	•	•	

d_i Decision—maker: person or group responsible for developing a course of action and leading implementation.

• Input provider: person or group who provides ideas or information so decision maker can make an informed decision.

© Collaborative participant: person or group who partners with decision maker in gathering and processing information and participates in development of actions.

Lincoln Middle School Decision Making Flow chart

The purpose of this document is to provide guidance, communication, and clarity about how decisions flow centrally and systemically. BOE delegates responsibilities to the Superintendent restricted by and defined by executive limitations and ends policies. Ultimately, the superintendent is responsible for the leadership and prudent management of the district's operational and instructional functions of the district. Major building decisions will be made using 2/3 majority vote.

Topic	District Administrators	Principal Administrative Team	SAC PTO	Leadership Team	Staff	Student
Extracurricular Programs	d	d			•	
Summer School	d					
Scheduling	d	d		•	•	
Standards	d			•	•	
Site Materials	©	d	•	•	•	
Courses & Programs	d	•	•	•	•	
Security	d	d		•	•	
Facilities	d	d	•	•	•	
Budget & Finance	d	d	©	•	•	
Hiring	©	d	•-When Principal	•	•	
Substitutes	d	d			•	
Discipline of Staff	d	d				
Fundraising		d	©-PTO	©	©	•
Student Activities		©		©	©	•

d—Decision maker: person or group responsible for developing a course of action and leading implementation.

•- Input provider: person or group who provides ideas or information so decision maker can make an informed decision.

©-Collaborative participant: person or group who partners with decision maker in gathering and processing information and participates in development of actions.