



# Lincoln Middle School, an IB World School



OCTOBER 2020

Lincoln Newsletter

PAGE 1

**Address:**  
**1600 Lancer Dr.**  
**Fort Collins, CO 80521**

**Phone Number:**  
**(970) 488-5700**

**Attendance:**  
**(970) 488-5800**

**Principal**  
**Penny Stires**

**Assistant Principal**  
**Jake McCollum**

**Assistant Principal**  
**Ryan Thomson**

**[Click here for  
School Website](#)**



## Principal's Message

Lincoln Middle School Families:

Happy October! The focus of this communication will be sharing what the week of October 19th will look like for our students. Remember, this is the week we switch to all day, in person learning at half capacity. October 19th is a 6th grade transition day for all "A" 6th grade students. 6B students will not have school on October 19th. October 20th is a 6th grade transition day for "B" 6th grade students. 6A students will not have school on October 20th. On these two days, 7th and 8th grade students will engage virtually, from home using the schedule we are currently on. October 21st is an "A" day for all grade levels to attend at Lincoln.

After our two 6th grade transition days synchronous classes are Monday-Thursday with all student engaging in their math, science, social studies, English, Spanish, and some encore classes. Friday students are all working from home. Friday is a day that all students are expected to work on assignments, visit teachers during office hours, and re-do assessments. There will NOT be Advisory classes on Friday with our new schedule. When your child is at school on their designated day, they will be

completing the class in person and with the teacher. When your child is at home, they will be required to join the class virtually via Microsoft Teams. This schedule will easily allow for us to overcome any barriers around transportation, illness or family circumstances that may arise. It also allows for us to easily move between in person learning and remote learning.

The district has indicated they will use the transportation list that was generated back in August. If you believe you need transportation and did not apply, you can call them directly at 490-3232.

Please review and reference the attached documents for more information on schedules and expectations.

There are three optional parent meetings scheduled if you have specific questions that you would like to ask. Spanish interpretation will be available at all meetings.

Warm Regards,  
Penny Stires  
Principal

Lincoln Middle, an IB World School  
(970) 488-5700



Since 1964 We've Been

*Growing Healthy Kids*



Well Care Visits  
for Kids & Teens



Designated "Sick"  
& "Well" Locations



Phone Nurse  
Available



4 Convenient  
Locations

Call to Schedule Your Appointment: 970.482.2515



Professional Organizing  
Organizing Space and Time

Student organizing  
and coaching to make  
remote learning a success



Clear Surroundings  
Organizing

970.420.4965

www.ClearSurroundings.com

## Principal's Message, continued...

**6<sup>th</sup> Grade optional parent meeting: October 12<sup>th</sup> at 6:00 p.m.**

[https://teams.microsoft.com/l/meetup-join/19%3ameeting\\_MmRkMzdIZmUtY2Q2Ni00NDRjLWEyZDEtNWViMjljZGU1NzZm%40thread.v2/0?context=%7b%22Tid%22%3a%220d6d846c-eadd-4b6c-b03e-f15cd4b7e9cf%22%2c%22Oid%22%3a%22276aaa25-9c82-488b-a0e6-9fb8a80d0c0f%22%7d](https://teams.microsoft.com/l/meetup-join/19%3ameeting_MmRkMzdIZmUtY2Q2Ni00NDRjLWEyZDEtNWViMjljZGU1NzZm%40thread.v2/0?context=%7b%22Tid%22%3a%220d6d846c-eadd-4b6c-b03e-f15cd4b7e9cf%22%2c%22Oid%22%3a%22276aaa25-9c82-488b-a0e6-9fb8a80d0c0f%22%7d)

**7<sup>th</sup> Grade optional parent meeting: October 13<sup>th</sup> at 6:00 p.m.**

[https://teams.microsoft.com/l/meetup-join/19%3ameeting\\_NDE3NGUwMzYtZTk0OS00ZjQ4LTg5ODEtZTliMmY0N2M2ZDJk%40thread.v2/0?context=%7b%22Tid%22%3a%220d6d846c-eadd-4b6c-b03e-f15cd4b7e9cf%22%2c%22Oid%22%3a%22276aaa25-9c82-488b-a0e6-9fb8a80d0c0f%22%7d](https://teams.microsoft.com/l/meetup-join/19%3ameeting_NDE3NGUwMzYtZTk0OS00ZjQ4LTg5ODEtZTliMmY0N2M2ZDJk%40thread.v2/0?context=%7b%22Tid%22%3a%220d6d846c-eadd-4b6c-b03e-f15cd4b7e9cf%22%2c%22Oid%22%3a%22276aaa25-9c82-488b-a0e6-9fb8a80d0c0f%22%7d)

**8<sup>th</sup> Grade optional parent meeting: October 14<sup>th</sup> at 6:00 p.m.**

[https://teams.microsoft.com/l/meetup-join/19%3ameeting\\_ODUzODc1MWEtNjE5NS00MGJiLWJiNTctMTQyZThhMjQyYmUw%40thread.v2/0?context=%7b%22Tid%22%3a%220d6d846c-eadd-4b6c-b03e-f15cd4b7e9cf%22%2c%22Oid%22%3a%22276aaa25-9c82-488b-a0e6-9fb8a80d0c0f%22%7d](https://teams.microsoft.com/l/meetup-join/19%3ameeting_ODUzODc1MWEtNjE5NS00MGJiLWJiNTctMTQyZThhMjQyYmUw%40thread.v2/0?context=%7b%22Tid%22%3a%220d6d846c-eadd-4b6c-b03e-f15cd4b7e9cf%22%2c%22Oid%22%3a%22276aaa25-9c82-488b-a0e6-9fb8a80d0c0f%22%7d)

### TIPS FOR SUCCESS IN YOUR RETURN TO SCHOOL!

- Students should charge their laptops every evening at home.
- Students are encouraged to bring their water bottles. Water stations are open but water fountains are closed.
- Your child is expected to wear their mask while at Lincoln. The mask must cover their nose and mouth. We will provide mask breaks during the day.
- It is the parent's responsibility to check each day for symptoms. Please help us protect our school community.
- Listen to all PSD phone calls. We may have short notice in our need to switch gears to virtual learning.
- The PSD website has many COVID resources for families!

Choose the dealer  
that puts Customers 1st!

2019  
CUSTOMER FIRST  
AWARD FOR EXCELLENCE



Fort Collins  
Jeep

224 W Harmony Rd | 970.632.9770 | fortcollinsJEEP.com

Salud Fort Collins  
Family Health Centers

**WE ARE HERE FOR  
YOUR CHILD'S HEALTH!**

MEDICAL • DENTAL • PHARMACY  
BEHAVIORAL HEALTH

saludclinic.org

Call us to schedule  
your appointment today!

**(303) 697-2583**



**CLICK IT**

Click on the  
Ads in this  
Newsletter

...to learn more about  
these great companies!

With COVID-19,  
things are tough  
for everyone.

Colorado Spirit  
has you covered  
when you need  
to talk with an  
understanding voice  
who can connect you  
with resources, or  
just be there to listen.

**(970) 221-5551**



SUMMITSTONE  
HEALTH PARTNERS

**CLICK IT**

Click on the  
Ads in this  
Newsletter

...to learn more about  
these great companies!

## First Week of School

### WHAT THE FIRST WEEK OF SCHOOL WILL LOOK LIKE

**Monday: October 19, 2020**

**Green Day**

6A @ Lincoln

6B-no school

7 & 8 – stay on current virtual schedule from home (Green)

**Tuesday: October 20, 2020**

**Green Day**

6B @ Lincoln

6A-no school

7 & 8-stay on current virtual schedule from home (Green)

**Wednesday: October 21, 2020**

**Yellow Day**

6A, 7A, 8A @ Lincoln-New all-day schedule

6B, 7B, 8B attend classes virtually- New all-day schedule

**Thursday: October 22, 2020**

**Yellow Day**

6B, 7B, 8B @ Lincoln- New all-day schedule

6a, 7A, 8A attend classes virtually- New all-day schedule

**Friday: October 23, 2020**

No students @ Lincoln

Asynchronous day for all students/Teacher office  
hours

**NO FRIDAY ADVISORY**



**WATER RESTRICTIONS  
BEGIN OCT. 1**

**STOP OUTDOOR WATER USE.**

HORSETOOTH OUTLET PROJECT



FCGOV.COM/HOP  
970-416-8040, V/TDD 711

9/20

**All Women. Always.**

Comprehensive women's  
healthcare for all stages of life.

Loveland &  
Fort Collins



970.493.7442

womensclinicnoco.com



## Daily Bell Schedule

### 2020-21 Lincoln's Daily Bell Schedule

6 <sup>th</sup> Grade	7 <sup>th</sup> Grade	8 <sup>th</sup> Grade
Advisory (Only for in-school students) 8:05-8:35	Advisory (Only for in-school students) 8:05-8:35	Advisory (Only for in-school students) 8:05-8:35
1 Encore 8:40-9:30 *see below schedule	1 Core 8:40-9:30 All synchronous 9:30-9:55 Teacher directed	1 Core 8:40-9:30 All synchronous 9:30-9:55 Teacher directed
2 Encore 9:35-10:25 *see below schedule	2 Core 10:00-10:50 All synchronous 10:50-11:15 Teacher directed	2 Core 10:00-10:50 All synchronous 10:50-11:15 Teacher directed
6 <sup>th</sup> Lunch 10:30-11:00 (30 minutes)	7 <sup>th</sup> Lunch 11:20-11:50 (30 minutes)	3 Core 11:20-12:10 All synchronous 12:10-12:35 Teacher directed
3 Core 11:05-11:55 All synchronous 11:55-12:20 Teacher directed	3 Encore 11:55-12:45 *see below schedule	8 <sup>th</sup> Lunch 12:40-1:10 (30 minutes)
4 Core 12:25-1:15 All synchronous 1:15-1:40 Teacher directed	4 Core 12:50-1:40 All synchronous 1:40-2:05 Teacher directed	4 Encore 1:15-2:05 *see below schedule
5 Core 1:45-2:35 All synchronous 2:35-3:00 Teacher directed	5 Encore 2:10-3:00 *see below schedule	5 Encore 2:10-3:00 *see below schedule

\*\* Students will receive a mask break during each core class

**No health insurance?**  
You may qualify for financial help.



Free virtual  
and in-person  
appointments

Open Enrollment  
starts Nov. 1

**Health District**  
LARIMER HEALTH CONNECT  
**970-472-0444**  
larimerhealthconnect.org

This newsletter was published by  
The School Communications Agency

**CALL TODAY**  
and this space  
could be yours

*Retail special October through December*



**The School  
Communications  
Agency**

Joe Mivshek 970.420.7163  
Joe@SchoolCommunicationsAgency.com

TALKING TO  
SOMEONE  
CAN HELP.

OUT  
OF SORTS  
THESE DAYS?

970-221-5551

24/7 | NO COST



**CLICK IT**

Click on the  
Ads in this  
Newsletter

...to learn more about  
these great companies!

# SELLER'S MARKET

Call today!



Joe Mivshek

970.420.7163

joe.mivshek@km.com



**kw** KELLERWILLIAMS, REALTY  
NORTHERN COLORADO

## October 20<sup>th</sup> and 21<sup>st</sup> Bell Schedule

### October 20 (A) & 21 (B) Bell Schedule-YELLOW

6 <sup>th</sup> Grade	7 <sup>th</sup> Grade	8 <sup>th</sup> Grade
Advisory (Only for in-school students) 8:05-9:35	Advisory (Only for in-school students) 8:05-9:35	Advisory (Only for in-school students) 8:05-9:35
1 Encore 9:40-10:00	1 Core 9:40-10:25 All synchronous	1 Core 9:40-10:25 All synchronous
2 Encore 10:05-10:25	2 Core 10:30-11:15 All synchronous	2 Core 10:30-11:15 All synchronous
6 <sup>th</sup> Lunch 10:30-11:00 (30 minutes)	7 <sup>th</sup> Lunch 11:20-11:50 (30 minutes)	3 Core 11:20-12:10 All synchronous 12:10-12:35 Teacher directed (synchronous or asynchronous)
3 Core 11:05-11:55 All synchronous 11:55-12:20 Teacher directed (synchronous or asynchronous)	3 Encore 11:55-12:45	8 <sup>th</sup> Lunch 12:40-1:10 (30 minutes)
4 Core 12:25-1:15 All synchronous 1:15-1:40 Teacher directed (synchronous or asynchronous)	4 Core 12:50-1:40 All synchronous 1:40-2:05 Teacher directed (synchronous or asynchronous)	4 Encore 1:15-2:05
5 Core 1:45-2:35 All synchronous 2:35-3:00 Teacher directed (synchronous or asynchronous)	5 Encore 2:10-3:00	5 Encore 2:10-3:00

\*\* Students will receive a mask break during each core class

## Reach Parents in Larimer County through our mobile-ready newsletters

Market your business in both Poudre and Thompson school districts.

You gain visibility and targeted, increased awareness; schools gain funds from advertising revenue.

Advertise with The School Newsletter Company  
Joe Mivshek 970-420-7163 | SchoolNewsletterCompany@gmail.com



## Hybrid COVID Schedule for Families

ENCORE TEACHER	EXPECTATIONS	EXPECTATIONS
<b>-KETTLEWELL -GRIFFITH, J</b>	Students will join class when they are ON SITE	Students will complete 2 lessons independently
<b>-SCHROM -BEHRENS (OUTDOOR ED)</b>	Students will join class when they are ON SITE	Students will complete 2 lessons independently
<b>-LONG</b>	Students will join class when they are ON SITE	Students will complete 2 lessons independently
<b>-NEWHOUSE -GILLIS</b>	Students will join class when they are ON SITE	Students will complete 2 lessons independently
<b>-PANIGHETTI</b>	Students will join class when they are ON SITE	Students will complete 3 lessons independently
<b>-HANSEN -BERRY- (DEBATE)</b>	Students will join class when they are ON SITE	Students will complete 2 lessons independently
<b>-BENT (DANCE)</b>	Students will join class when they are ON SITE	Students will complete 2 lessons independently

ENCORE TEACHER	EXPECTATIONS	EXPECTATIONS
<b>-WOODARD -GONZALEZ</b>	Students will join class when they are ON SITE and OFF SITE	Students will complete 1 lessons independently
<b>-SHIRLEY -PRICE -BRUNO</b>	Students will join class when they are ON SITE and OFF SITE	Students will complete 1 lesson independently
<b>-BRENNAN (PE)</b>	Students will join ON SITE and when they are OFF SITE	Students will complete 1 lesson independently
<b>-FONTE</b>	Students will join ON SITE and when they are OFF SITE	Students will complete 1 lesson independently
<b>-HALLETT</b>	Students will join ON SITE and when they are OFF SITE	Students will complete 1 lesson independently
<b>-CAMPBELL -WREN (YB &amp; LEADERSHIP)</b>	Students will join ON SITE and when they are OFF SITE	Students will complete 1 lesson independently
<b>RUNYAN (LIT SKILLS)</b>	Students will join ON SITE and when they are OFF SITE	Students will complete 1 lesson independently





## Lincoln Middle, an IB World School

### Quarter 2 - Phase 3: Hybrid in-School/Remote Learning Calendar

All students have been assigned to an A or B group. When Group A is at school, Group B joins from home & vice-versa.

Please check ParentVue for your student's assignment. <https://www.psdschools.org/ParentVUE>.

**Monday - Thursday:** Students attend live classes following the same schedule, with 50% of the students at school per day.

**Fridays:** Advisory & Asynchronous Learning <https://www.psdschools.org/psd2020-21/remoteteaching-whattoexpect>

OCTOBER						
S	M	T	W	TH	F	S
				1	2	3
4	5	6	7	8	9	10
11	12	13	14	15	SB	17
18	★9 A	★10 B	21 A	22 B	23	24
25	26 A	27 B	28 A	29 B	30	31

NOVEMBER						
S	M	T	W	TH	F	S
1	2 A	3 B	4 A	5 B	6	7
8	9 A	10 B	11 A	12 B	13	14
15	16 A	17 B	18 A	19 B	20	21
22	23 A	24 B	SB	SB	SB	28
29	30 A					

DECEMBER						
S	M	T	W	TH	F	S
		1 B	2 A	3 B	4	5
6	7 A	8 B	9 A	10 B	11	12
13	14 A	15 B	16 A	17 B	18	19
20	SB	SB	SB	SB	SB	26
27	SB	SB	SB	SB		

★9 A	10/19 - ONLY 6th gr. Group A attend at Lincoln.
★10 B	10/20 - ONLY 6th gr. Group B attend at Lincoln.
21 A	All grades Group A attend at Lincoln. All Group B join virtually from home
	Holiday - PSD Closed
SB	School Break

	Green Days
	Yellow Days
	Advisory & Asynchronous Learning (Fri)

#### School Holidays/Intermissions

November 25-27	Thanksgiving Break (No students)
December 19	Winter Break Starts
January 4	Winter Break Ends (No Students)
January 4	K-12 Staff Work Day
January 18	Martin Luther King Jr. Holiday (No students)
February 15	Building/Work Day (No Students)
March 13-21	Spring Break
April 16	K-12 Conference Exchange Day (No students)
May 17	Building/Work Day (No Students)
May 26	Last Day of school

### Criteria for students return

- Those who have COVID-19-like symptoms of illness = Isolation
- Must stay home from school until these three criteria are met:
  - ❖ Student has had no fever for at least 24 hours without using medicine that reduces fevers
  - AND
  - ❖ Other symptoms have improved (for example, when your cough or shortness of breath have improved)
  - AND
  - ❖ At least 10 days have passed since symptoms first appeared.
- These are the current criteria from Larimer County Department of Health and Environment, and our PSD workflows.



## COVID-19 GUIDANCE

# Can I go to school today?

*At-home symptom screening for parents and staff*

Parents and guardians can use these symptom checklists to determine when to keep their child at home based on the level of COVID-19 transmission in their community (e.g. Is the community in Protect Your Neighbor or Safer at Home or Stay at Home). School staff can also use this tool to determine if they need to stay at home. **Any student or staff diagnosed with COVID-19 or who is a close contact of a COVID-19 case should not go to school and should isolate or quarantine according to public health recommendations.**

These lists refer only to new symptoms or a change in usual symptoms. A student/ staff should not be kept home for usual symptoms they experience due to a chronic condition unless they are worse than usual. These guidelines are in addition to your regular school guidance (for example, a child with vomiting should also not attend school based on usual school guidance).

**If your child is/ you are experiencing any potentially life-threatening symptoms please call 911.**

### Low Community Transmission (Protect Your Neighbors):

If any of the following symptoms are present, keep the child at home/ stay at home, inform the school of symptoms, and reach out to a health care provider about COVID-19 testing and next steps for treatment.

- ☐ Feeling feverish, having chills, or temperature 100.4°F or higher.
- ☐ New or unexplained persistent cough.
- ☐ Shortness of breath.
- ☐ Difficulty breathing.
- ☐ Loss of taste or smell.

### Sustained Community Transmission (Safer at Home or Stay at Home):

If any of the following symptoms are present, keep the child at home/ stay at home, inform the school of symptoms, and reach out to a health care provider about COVID-19 testing and next steps for treatment.

- ☐ Feeling feverish, having chills, or temperature 100.4°F or higher.
- ☐ New or unexplained persistent cough.
- ☐ Shortness of breath.
- ☐ Difficulty breathing.
- ☐ Loss of taste or smell.
- ☐ Fatigue.
- ☐ Muscle aches.
- ☐ Headache.
- ☐ Sore throat.
- ☐ Nausea or vomiting.
- ☐ Diarrhea.
- ☐ Runny nose or congestion.



## COVID Protocols for Students



2020-2021 Poudre School District

### Protocols for Students

#### Isolation, Quarantine and Outbreak

<p><b>Do not come to school:</b></p>	<ul style="list-style-type: none"> <li>• If a student feels ill</li> <li>• If a student has a fever above 100.4 degrees F</li> </ul>
<p><b>Isolation:</b></p> <p>Isolation is for those who have symptoms, who are sick, or who have tested positive for COVID-19.</p> <p>Isolation separates those who are infected from those who are not.</p>	<ul style="list-style-type: none"> <li>• Student is diagnosed with COVID-19 with a positive test result.</li> </ul> <p><b>or</b></p> <ul style="list-style-type: none"> <li>• Has symptoms of COVID-19. Symptoms, especially early on, may be mild and feel like a common cold. COVID-like symptoms include cough, shortness of breath, fever, loss of taste/smell, fatigue, headache, sore throat, muscle or body aches, congestion/runny nose, nausea/vomiting, diarrhea.</li> </ul> <p><b>or</b></p> <ul style="list-style-type: none"> <li>• Student feels ill and believes they may have COVID-19.</li> <li>• Parent/Guardian needs to call the attendance line at the student's school immediately if the student has been diagnosed with COVID-19 and/or is beginning isolation.</li> <li>• Parent/Guardian should leave a message on the attendance line with information about the student's illness.</li> <li>• On the attendance line, parent/guardian will be directed to call the school nurse/health tech using the phone number provided.             <ul style="list-style-type: none"> <li>○ The school nurse/health tech will ask a specific list of questions including:                 <ul style="list-style-type: none"> <li>▪ Last date on at a PSD school or location</li> <li>▪ Whether student was symptomatic while at school</li> <li>▪ All areas visited within school</li> <li>▪ All persons that had prolonged exposure, or close contact</li> </ul> </li> <li>○ The school nurse/health tech contacts the Larimer County Department of Health and Environment (LCDHE). LCDHE will help PSD determine a course of action for the site(s) impacted.</li> <li>○ The school nurse/health tech will also notify PSD's contact tracing liaison.</li> </ul> </li> </ul>

## COVID Protocols for Students, continued...

	<ul style="list-style-type: none"> <li>○ It is important to protect the privacy of individuals through the entire process.</li> </ul>
<b>Isolate until:</b> Those who have symptoms, who are sick, or who have tested positive.	<ul style="list-style-type: none"> <li>• Student has had no fever for at least 24 hours without using medicine that reduces fevers.</li> </ul> <p><b>and</b></p> <ul style="list-style-type: none"> <li>• Other symptoms have improved (for example, when your cough or shortness of breath have improved).</li> </ul> <p><b>and</b></p> <ul style="list-style-type: none"> <li>• At least 10 days have passed since symptoms first appeared.</li> </ul>
If isolation begins during the school day:	<ul style="list-style-type: none"> <li>• Isolate the student in a designated sick area in the building until they can safely return home.</li> <li>• The designated sick area will be separated from routine care/medication administration to the best degree possible.</li> <li>• Personal Protective Equipment (PPE) will be available for staff monitoring a sick student. Staff monitoring will wear a gown, mask and face shield (both) and gloves.</li> <li>• The school nurse will call PSD's contact tracing liaison AND the Larimer County Department of Health and Environment (LCDHE). LCDHE will help PSD determine a course of action for the site(s) impacted.</li> <li>• It is important to protect the privacy of individuals through the entire process.</li> </ul>
<b>Exposure:</b>	<ul style="list-style-type: none"> <li>• Exposure is defined as having close contact with someone who has been diagnosed with COVID-19 (referred to as a confirmed case) or who has COVID-like symptoms without another reasonable explanation (referred to as a probable case). For COVID-19, a close contact is defined as any individual who: <ul style="list-style-type: none"> <li>○ Was within 6 feet of someone diagnosed with COVID-19 for at least 10 minutes total.</li> <li>○ Provided care for someone who is sick with COVID-19.</li> <li>○ Had direct physical contact with someone who is sick with COVID-19.</li> <li>○ Shared eating or drinking utensils with someone who is sick with COVID-19.</li> </ul> </li> </ul>

## COVID Protocols for Students, continued...

	<ul style="list-style-type: none"> <li>○ Got respiratory droplets from someone who is sick with COVID-19 on them (through sneezing, coughing, shouting, etc.).</li> <li>○ Was in the same cohort as a person diagnosed with COVID-19.</li> <li>• If you believe your student has been exposed to COVID-19, please call your school attendance line and school nurse/health tech immediately.             <ul style="list-style-type: none"> <li>○ The school nurse/health tech will contact the Larimer County Department of Health and Environment (LCDHE). LCDHE will help PSD determine a course of action for the student impacted.</li> <li>○ The school nurse will call PSD's contact tracing liaison to alert to the student case.</li> </ul> </li> <li>• It is important to protect the privacy of individuals through the entire process.</li> </ul>
<p><b>Quarantine when:</b></p> <p>Quarantine is for those who have potentially been exposed to COVID-19.</p> <p>Quarantine keeps someone potentially exposed to those with the virus away from others.</p>	<ul style="list-style-type: none"> <li>• A person should quarantine when a household member or other close contact of the staff member has been diagnosed with COVID-19 or is experiencing COVID-19 symptoms.</li> <li>• If a person in quarantine develops symptoms of COVID-19 they begin the isolation protocol (above).</li> <li>• The parent/guardian of the student in quarantine must notify the school nurse/health tech and attendance line at their school immediately if they have been diagnosed with COVID-19 and/or beginning isolation.             <ul style="list-style-type: none"> <li>○ The school nurse/health tech contacts the Larimer County Department of Health and Environment (LCDHE). LCDHE will help PSD determine a course of action for the site(s) impacted.</li> <li>○ The school nurse will call PSD's contact tracing liaison to alert to the student case.</li> </ul> </li> <li>• It is important to protect the privacy of individuals through the entire process.</li> </ul>
<p><b>Quarantine until:</b></p> <p>Even if you test negative for COVID-19 or feel healthy, you should stay home</p>	<ul style="list-style-type: none"> <li>• Student needs to quarantine for 14 days after their last contact with a person who had COVID-19.             <ul style="list-style-type: none"> <li>○ Watch for fever (100.4), cough, shortness of breath, or other symptoms of COVID-19.</li> </ul> </li> </ul>
<p>(quarantine) since symptoms may appear 2 to 14 days after exposure to the virus.</p>	<ul style="list-style-type: none"> <li>○ If possible, stay away from others, especially people who are at higher risk for getting very sick from COVID-19.</li> </ul>

**Sources:** Larimer County Department of Health and Environment (LCDHE), Colorado Department of Public Health and Environment (CDPHE), Colorado Department of Education (CDE), Centers for Disease Control and Prevention (CDC).  
Updated Sept. 15, 2020

Continued...



## COVID Protocols for Students, continued...



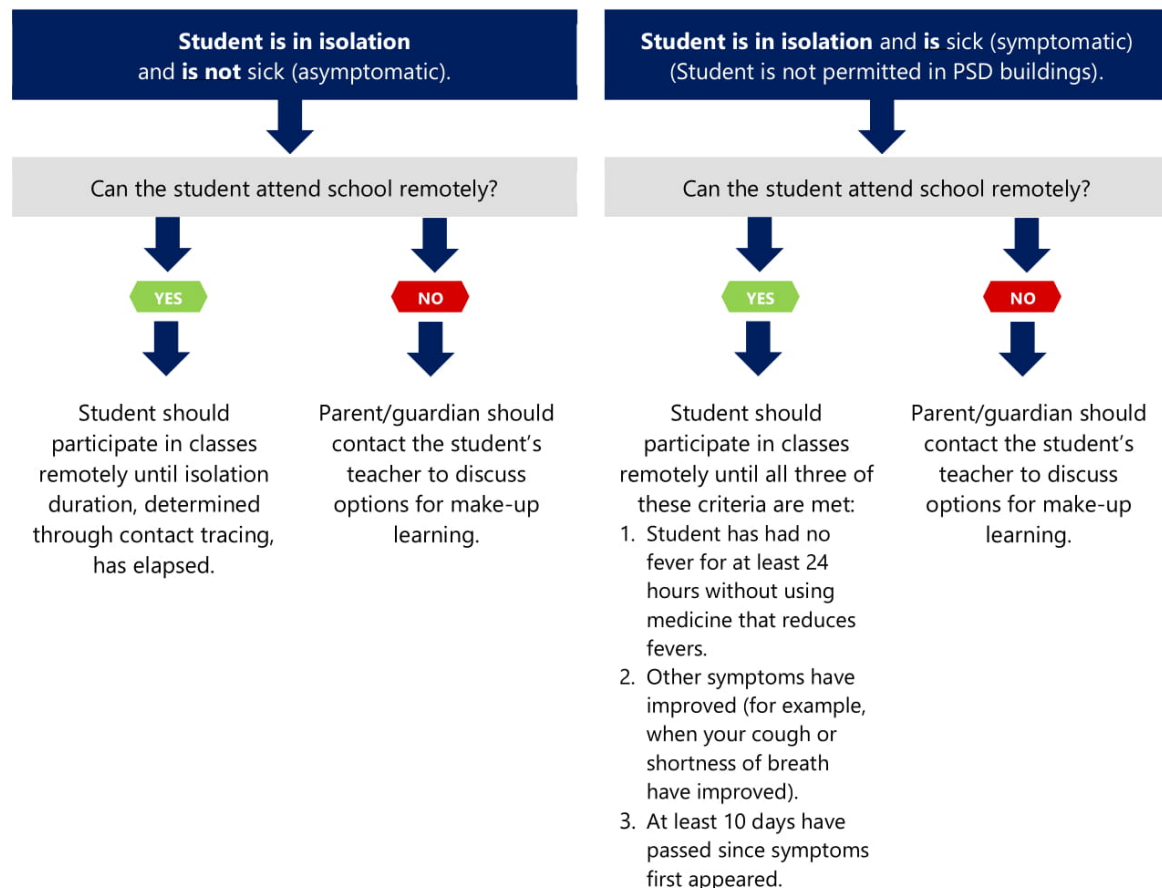
2020-2021 Poudre School District

### Protocols for Students COVID Workflow

Is your student not feeling well? **FOLLOW THESE STEPS** and **DO NOT SEND YOUR STUDENT TO SCHOOL:**

1. Contact your student's school attendance line to alert the school that your student will be absent. Please leave a message on this line indicating that your student is ill, may be experiencing COVID-19 symptoms (if this is the case), and/or has been tested for COVID-19.
2. Contact the School Nurse/Health Tech using the phone number provided on the attendance line and leave a message with information about your student's circumstances.
3. You will be contacted by the school nurse/health tech and/or PSD's contact tracing liaison or county health contract tracers to answer some specific questions and with next steps to follow.
4. If you have not already done so, contact your student's health care provider.

PSD will protect the privacy of individuals through the entire process.



Sources: Larimer County Department of Health and Environment (LCDHE), Colorado Department of Public Health and Environment (CDPHE), Colorado Department of Education (CDE), Centers for Disease Control and Prevention (CDC). Updated Sept. 15, 2020

Continued...

## COVID Protocols for Students, continued...



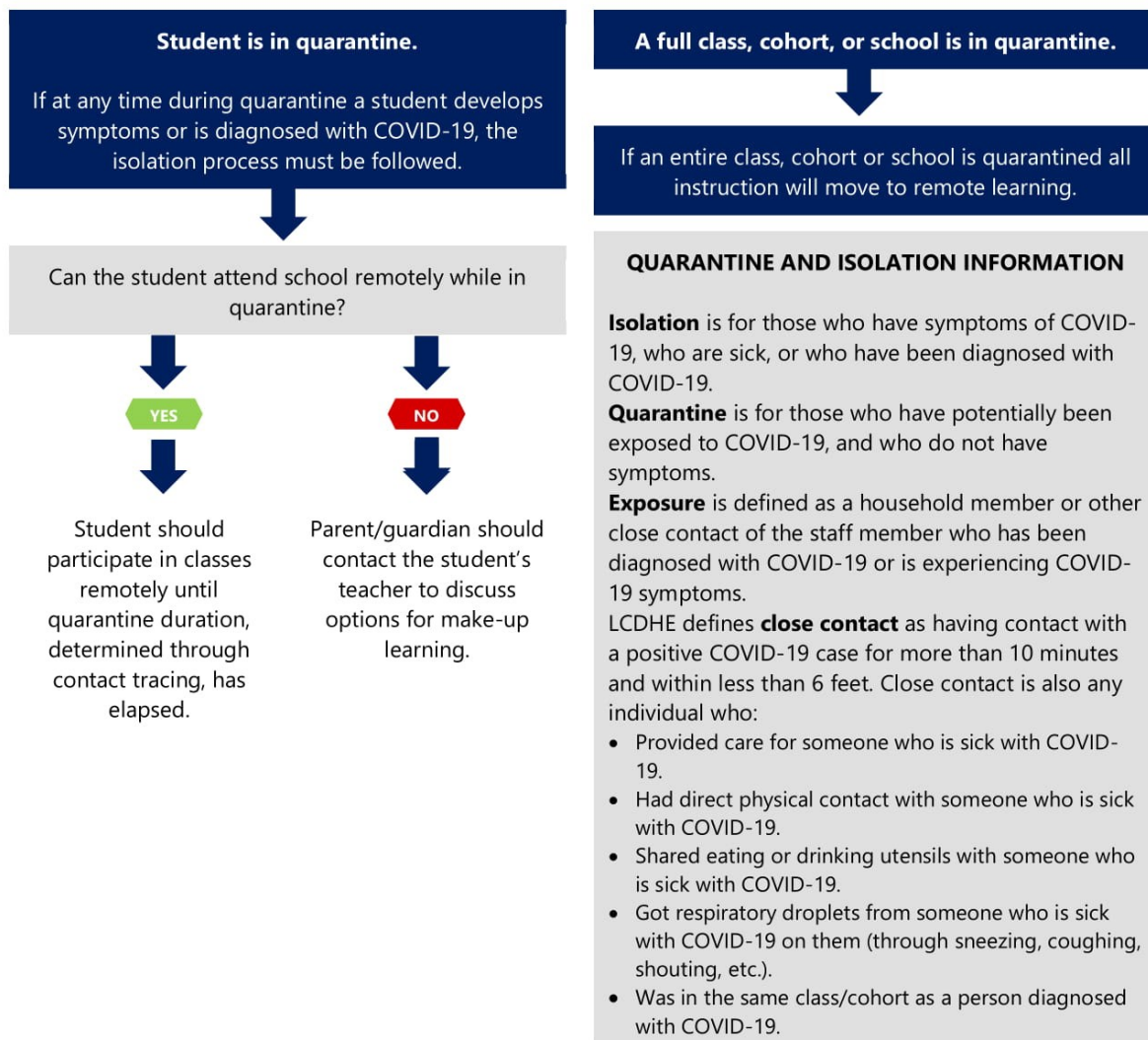
2020-2021 Poudre School District

### Protocols for Students COVID Workflow

If your student is under quarantine, **FOLLOW THESE STEPS** and **DO NOT SEND YOUR STUDENT TO SCHOOL**:

1. Contact your student's school attendance line to alert the school that your student will be absent. Please leave a message on this line indicating that your student is under quarantine.
2. Contact the School Nurse/Health Tech using the phone number provided on the attendance line and leave a message with information about your student's circumstances.
3. If you have not already done so, contact your student's health care provider

PSD will protect the privacy of individuals through the entire process.



Sources: Larimer County Department of Health and Environment (LCDHE), Colorado Department of Public Health and Environment (CDPHE), Colorado Department of Education (CDE), Centers for Disease Control and Prevention (CDC). Updated Sept. 15, 2020

Continued...